

## ONE STEP Giardia Antigen Test

For veterinary diagnostic use only

# Anigen Rapid Giardia Ag Test Kit

### Principles

Anigen Rapid Giardia Ag Test Kit is a chromatographic immunoassay for the qualitative detection of giardia antigen in canine or feline feces.

Anigen Rapid Giardia Ag Test Kit shows two letters which are test(T) line and control(C) line on the surface of device. The control line is a reference line which provides the test is performing properly. The control line has to be appeared at all times after the test has performed. If the giardia antigens exist in sample, a purple test line would appear in the result window.

The highly selective antibodies to giardia are used as a capture and detector in the assay. These antibodies are capable of detecting giardia antigens in canine or feline feces with high accuracy.

### Materials provided

Materials	2 Tests/Kit	10 Tests/Kit
Anigen Giardia Ag Test device	2	10
Assay diluent tube	2	10
Disposable swab	2	10
Disposable dropper	2	10
Instructions for use	1	1

### Materials required, but not provided

- 1) Timer

### Precautions

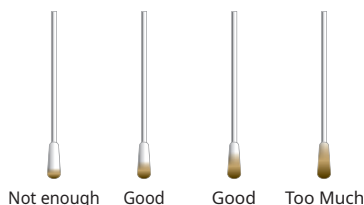
- 1) The test Kit is for canine and feline use only. Do not use for other animals.
- 2) The test device is sensitive to humidity as well as heat. Perform the test immediately after removing the test device from the foil pouch.
- 3) Do not reuse the test components.
- 4) Apply the sample using disposable dropper vertically.
- 5) Do not touch the membrane in the result window of test device.
- 6) Do not use the test kit beyond the stated expiration date marked on the package label.
- 7) Do not use the test kit if the pouch is damaged or the seal is broken.
- 8) Do not mix components from different lot numbers because the components in this kit have been quality control tested as standard batch unit.
- 9) All samples should be handled as being potentially infectious. Wear protective gloves while handling samples. Wash hands thoroughly afterwards.
- 10) Decontaminate and dispose of all samples, used kits and potentially contaminated materials safely in accordance with national and local regulations.
- 11) The target protein (Giardia Specific Antigen) of this test kit is very stable and resistible to various intestinal condition, so some cases after treatment of giardia may appear false positive result. Thus, This test kit is not suitable for use for verifying the progress of treatment and determining the cure and only recommended for primary antigen screening.

### Storage and Stability

- 1) Store the test kit at 2~30°C. **DO NOT FREEZE.**
- 2) Do not store the test kit in the direct sunlight.
- 3) The test kit is stable within the expiration date marked on the package label.

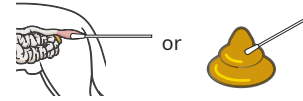
### Collection and Preparation of Sample

- 1) Canine or feline feces swab should be used for this test.
- 2) The samples should be tested immediately after collection.
- 3) If samples are not tested immediately, they should be stored at 2~8°C for 24 hours. For longer storage, freeze at -20°C or below. Frozen samples should be brought to room temperature (15~30°C) prior to use.
- 4) The amount of fecal swab may affect the results. It is required to follow the swab amount of feces as shown in the picture on the below. Excessive fecal amount may induce a false positive result and slow migration.

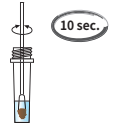


### Procedure of the Test

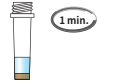
- 1) All reagents and samples must be at room temperature (15~30°C) before use.
- 2) Collect feces samples using a swab.



- 3) Insert the swab into the assay diluent tube and mix the swab until the sample has been dissolved into the assay diluent (Approximately 10 sec).



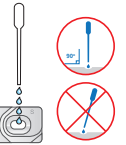
- 4) Wait for 1 minute to settle down the large particles.



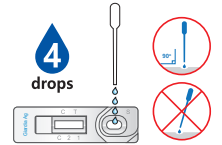
- 5) Remove the test device from the foil pouch, and place it on a flat and dry surface.



- 6) Using the disposable dropper, take the supernatant sample in the tube.



- 7) Add 4 drops of mixed sample into the sample hole (S), drop by drop vertically.



- 8) Start the timer. The sample will flow across the result window. If it does not appear after 1 minute, add one more drop of mixed sample to the sample hole.

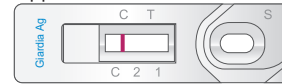


- 9) Interpret test results at 5~10 minutes. Do not read the result after 20 minutes.

### Interpretation of the Result

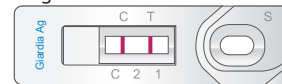
#### 1) Negative result

Only control("C") line appears in the result window.



#### 2) Positive result

Test ("T") line and control ("C") line within the result window indicate the presence of Giardia antigen.



#### 3) Invalid Result

If the control ("C") line does not appear, the result might be considered invalid. The sample should be retested.



### Limitations of the Test

- 1) Although the Anigen Rapid Giardia Ag Test kit is very accurate for detecting Giardia antigen, a low incidence of false results can occur. Other clinical and/or laboratory tests might be required if questionable results are obtained. As other diagnostic tests, a definitive clinical diagnosis should not be based on the result of a single test, but should be diagnosed by the veterinarian after all clinical and laboratory findings have been evaluated.
- 2) The reading window may show a light pink background coloration; this will not affect the accuracy of the results.
- 3) BioNote and its distributors cannot be held responsible for the consequences of misuse or misinterpretation of the results given by the test.

Doc. No.: I1804-8EC  
Issued date: Jan. 14, 2020

# Anigen Rapid Giardia Ag Test Kit

## 安捷贾第鞭毛虫抗原快速检查试纸

### 原理

安捷贾第鞭毛虫抗原快速检查试纸采用免疫色谱分析法定性地检测犬猫粪便中的贾第鞭毛虫抗原。

安捷贾第鞭毛虫抗原快速检查试纸表面有“T”和“C”分别代表测试线和控制线。在没有加样本之前两条线都不可见。控制线用于程序控制。如果测试正常进行控制线会一直存在。如果样本中有足够的贾第鞭毛虫抗原就会有一条紫色的测试线出现。

高度选择性的贾第鞭毛抗体用来捕捉反应物。这些抗体能准确地捕捉抗原。

### 提供的材料 (10份试纸)

材料	10份试纸
安捷贾第鞭毛虫抗原快速检测试纸	10
瓶稀释液	10
根样品采集棉签	10
一次性滴管	10
使用说明	1

### 需要但未提供的材料

计时器

### 注意事项

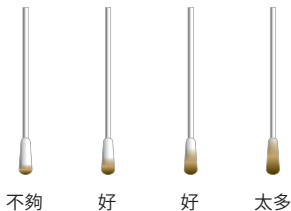
- 1) 仅用于犬和猫，不要用于其他动物。
- 2) 该试纸对湿度和温度敏感，请临用前再打开包装。
- 3) 不要重复使用。
- 4) 请垂直使用滴管。
- 5) 请不要触摸试纸的窗口。
- 6) 请在有效期前使用。
- 7) 请不要使用包装破损的试纸。
- 8) 试纸的每个成分均进行质控，请勿混用不同批号的产品。
- 9) 请按具有潜在传染性的物质进行处理样品。
- 10) 请按照当地的法律来处理一次性医疗废弃物。
- 11) 虽然本产品具备很高的敏感度和特异度，但是使用本产品时请注意不要用来检测治疗或者恢复过程中的患宠，请仅用于治疗前的初级筛查。

### 保存和稳定性

- 1) 试纸要保存于室温(2~30°C)。不要冷冻。
- 2) 不要存放于光线直射处。
- 3) 在有效期前是稳定的。

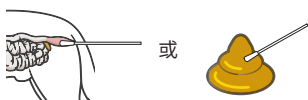
### 样品收集和准备

- 1) 采用犬猫粪便来检测。
- 2) 采集样本后立刻测试。
- 3) 如果样品不能马上检测，请置于2~8度可冷藏24小时，若放置于-20度可更久但使用时请恢复至室温。
- 4) 采集的样本量非常重要。请根据示意图来采集。过多的样本会显示假阳性和跑带缓慢。

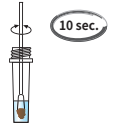


### 测试步骤

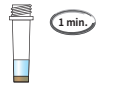
- 1) 需要在室温下使用 (15~30度)。
- 2) 利用拭子采集粪便样本。



- 3) 将棉签放入混油缓冲稀释液的样品管混合10秒钟。



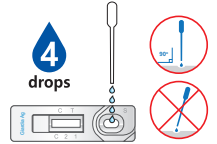
- 4) 静置试管1分钟。



- 5) 从铝箔包装中取出试纸，平放于桌面。
- 6) 使用一次性滴管，取试管中的上清液。



- 7) 向样品孔中滴加4滴混合液。混合液需要精确地、缓慢地、一滴一滴加入。



- 8) 果测试开始，你会看到紫色的条带在窗口移动。如果1分钟后仍然没有移动，再多加一滴。

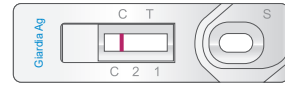


- 9) 5~10分钟后判断结果。不要超过20分钟后判断。

### 判读结果

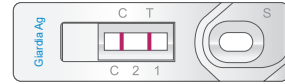
#### 1) 阴性结果

如果只有一条线(“C”)表示阴性结果。



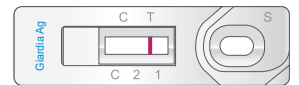
#### 2) 阳性结果

如果出现两条线(“T”和“C”)无论哪条先出现都意味着阳性结果。



#### 3) 无效结果

如果窗口中没有颜色的条带，意味着测试无效。需要重新采样测试一次。



### 测试限度

- 1) 即使安捷贾第鞭毛虫抗原快速检查试纸能准确地检测贾第鞭毛虫抗原，但是极低的错误也会发生。如果允许其他临床资料也是必须的。基于所有的检查和临床资料后，兽医得出的诊断才是正确的。
- 2) 阅读窗口可能会显示粉红色的背景，这不会影响结果的准确性。
- 3) 安捷公司和代理商不会对检测卡的使用不当或错误判定负责。